

C3D-LPM

SONAR IMAGING SYSTEM

Lightweight pole mount for small vessel, shallow water applications



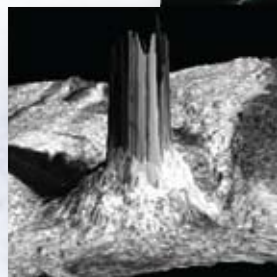
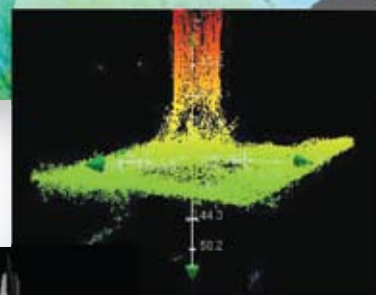
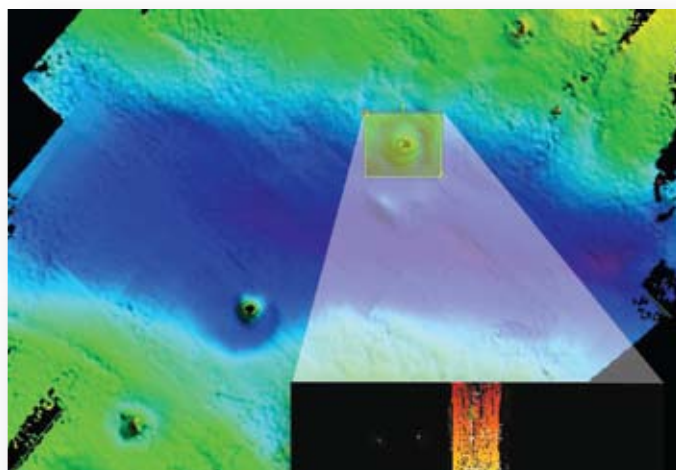
C3D-LPM Transceiver

The C3D-LPM transceiver houses the DSP, power supply and all the circuitry necessary for signal processing. The transceiver module interfaces to a standard PC (either supplied by Teledyne Benthos or customer supplied) via Ethernet. The DSP runs on 110/220 VAC power auto sensing.



C3D-PC Computer

The C3D-PC is a 2U, low profile, industrial rack mount computer installed with third party acquisition software to display and store C3D data. The small footprint allows for easy installation on most vessels. The PC operates on 110/220 VAC auto sensing.



C3D-LPM Sonar Imaging System



System Specifications

C3D System

Sonar Frequency:	200 kHz
Side Scan Range:	25 to 300 meters per side
Bathymetric Range:	10 to 12 times water depth
Resolution (across track)	
Side Scan Sonar:	4.5 cm
Bathymetry:	5.5 cm
Beam Width:	1 degree (one-way)
Pulse Length:	25 usec to 1 msec (depending on range)
Repetition Rate:	Up to 30 pings/sec
Depression Angle:	20, 30, 40 degrees
Transmit Source Level:	Max. 224dB re: 1uPa@1M

C3D-LPM

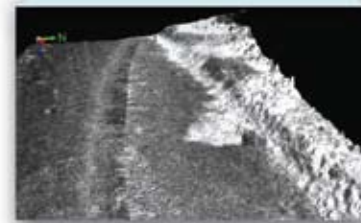
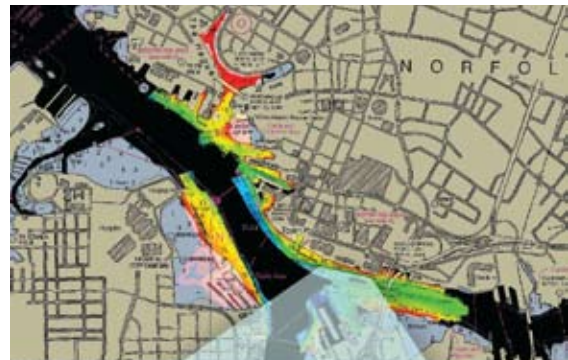
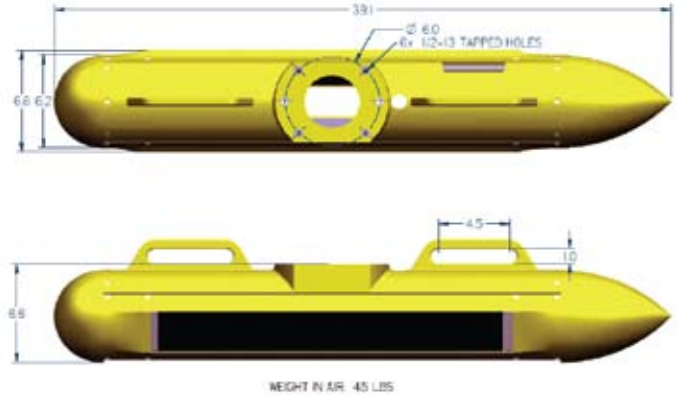
Construction:	Stainless steel imbedded in glass filled polyurethane
Length:	99.3 cm (39.1 inches)
Diameter:	17.3 cm (6.8 inches)
Weight (in air):	20.4 kg (45 lbs)

C3D-LPM Transceiver

Topside Interface	
Power Supply:	Input 110/220 VAC auto sensing
Network interface:	Ethernet
Dimensions:	2U Rack mount 48.3 cm (19 inches)
Weight:	9.5 kg (21 lbs)
Transducer Cables:	10 meters standard

C3D-PC

Operating System:	Windows XP
Processor:	Pentium processor
Storage:	Large capacity hard drive, writable CD/DVD
Network Interface:	Two 1000/100/10 Ethernet (compatible with ADSL high speed communications interface)
Serial:	RS232 x 4
Display Monitor:	19" flat panel



**TELEDYNE
BENTHOS**

A Teledyne Technologies Company

www.benthos.com

49 Edgerton Drive, North Falmouth, MA 02556 USA

Tel +1 508-563-1000 • Fax +1 508-563-6444 • E-mail: benthos@teledyne.com

Specifications subject to change without notice. 1/2008. ©2008 TELEDYNE BENTHOS, Inc. Other products and company names mentioned herein may be trademarks and/or registered trademarks.